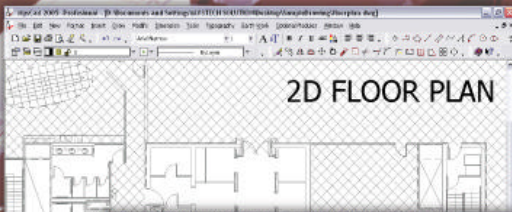


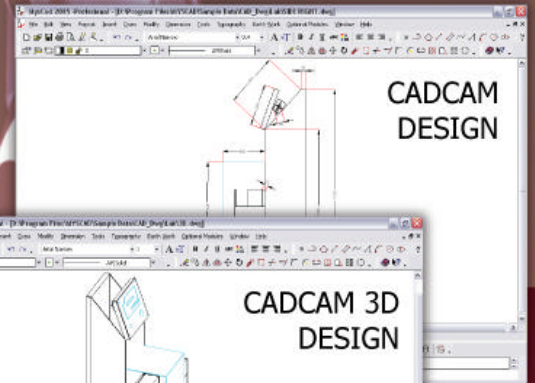
MYSCAD DESIGN DESKTOP



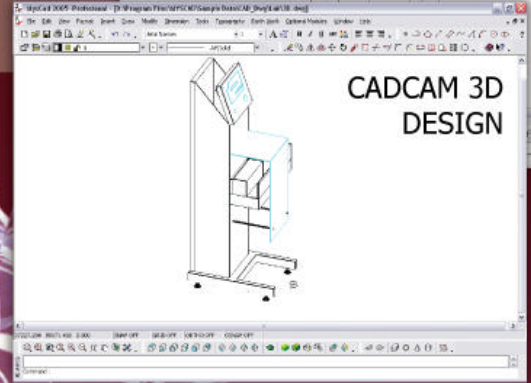
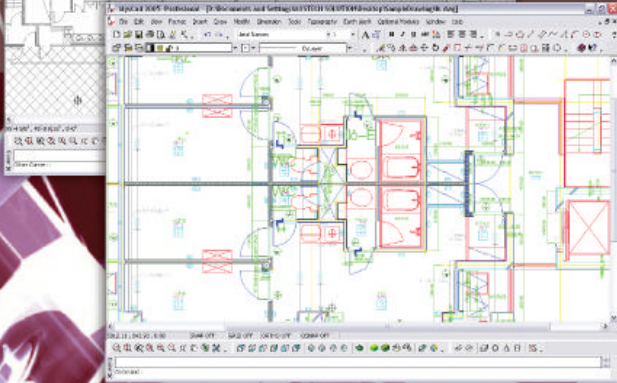
Design, Cad & Drafting with 3D entities texture & raster image support that is specially designed for the application such as municipal planning, interior design or any application that needs the 3D texture support & rendering.



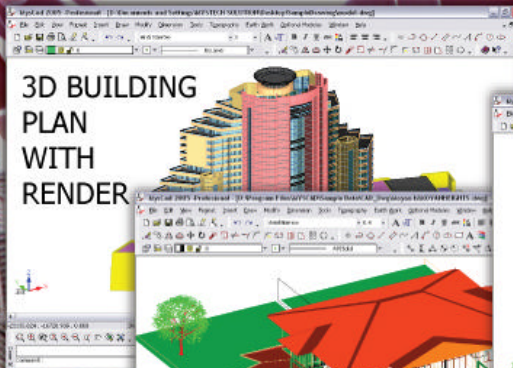
2D FLOOR PLAN



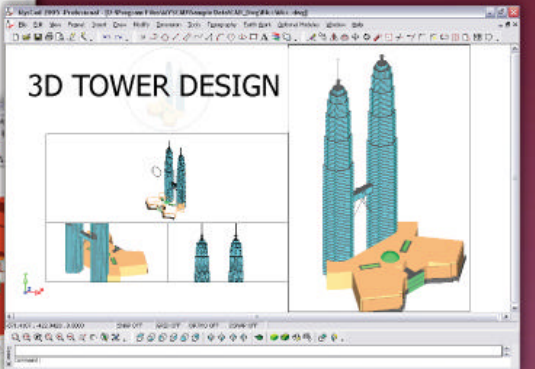
CAD/CAM
DESIGN



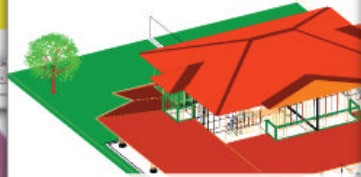
CAD/CAM 3D
DESIGN



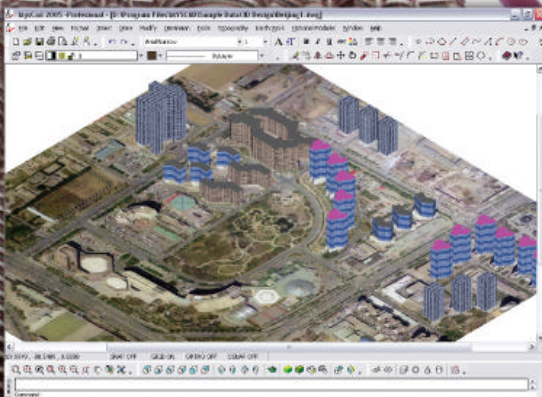
3D BUILDING
PLAN
WITH
RENDER



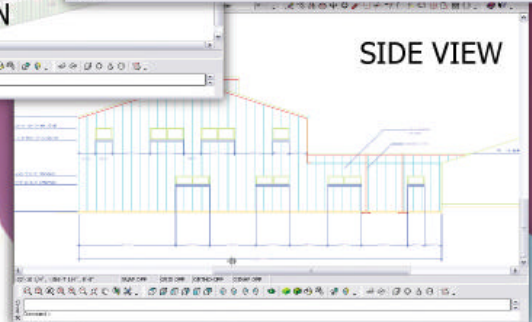
3D TOWER DESIGN



3D HOUSING DESIGN



CITY PLANNING &
MUNICIPAL DESIGN



SIDE VIEW



MYSCAD DESIGN DESKTOP



Remarks : AutoCad is the trademark of Autodesk

Design, Cad & drafting with 3D entities texture & raster image support that specially designed for the application such as municipal planning, interior design or any application that needs the 3D texture support & rendering.

→ KEY BENEFITS

- Dual Language In One Cad Platform System.
- Application –Architectural Design & Drafting and CAD & CAM applications.
- Support 2D + 3D design, 3D modeling with Raster Image Support And Rendering Facilities which can use for City planning, Municipal design and 3D applications.
- Ability to view and plot image files as a background for design data. Typical uses include the incorporation of aerial photographs, satellite imagery, and scanned images used as a backdrop for the location of existing or proposed features.

→ FEATURES & BENEFITS

Design, Cad & drafting with 3D entities texture & raster image support that specially designed for the application such as municipal planning, interior design or any application that needs the 3D texture support & rendering.

- Provides a full double precision point based coordinate geometry database, resulting in improved accuracy and data integrity.
- Delivers true designed-in support for the design conventions and geometric features commonly employed by industry professionals.
- Avoids the compromises faced by third party applications that are written within the limits of a more generalized CAD drafting environment.
- MYSCAD provides numerous key features that are unmatched by any other CAD environment and solves the most common and frustrating drafting production problems.
- Provides numerous mechanisms for capturing external data, as well as importing and exporting data in common file formats.
- 3D data model with dynaviews capabilities.
- 3D Snapping Mode with isometric view.
- Import and export ASCII files containing point numbers, coordinates, elevations, and descriptors in user-definable formats.

Authorized Dealer